



Cherish Lilinoe Pali

SEP 23, 1993 - AUG 3, 2025



Scan to Visit



MAUI MEMORIAL PARK
NAKAMURA MORTUARY
CEMETERY, CREMATION & FUNERAL

Table of Contents

Obituary	Page 3
Tribute Wall	Page 4
Media	Page 5



Cherish Lilinoe Pali

SEP 23, 1993 - AUG 3, 2025

Cherish Lilinoe Pali was born on September 23, 1993 to Ehuehuokekai Pali and the late Marie Elaina Bowyer.

Lil was the apple of her Daddy's eye, a miracle child he never imagined having. She was a lively, happy little girl who loved to run around the yard with her potbelly pig, going to the beach with her cousins, and spending time with her Papa and Mama.

As she got older she liked to ride her bike up and down the valley and upgraded from a potbelly pig to a Rottweiler named Taxer and, later, a Dobie mix named Daisy. She made her Daddy proud when she got into Maui Prep Academy and ,again, when she gave him his grandson, Thomas.

Lil is survived by her son, Thomas, her Daddy, Ehuehuokekai Pali, her partner, Christian Iwankiw, her Uncles Moku and Kaia, her Aunty Noa and numerous aunties, uncles, cousins, both blood and not. She will be deeply missed, and her memory and spirit will live in the hearts of all who knew her.

A Celebration of Life will be held at a later date.



Tribute Wall

Cherish Lilinoe Pali

SEP 23, 1993 - AUG 3, 2025



Benaiah Gabriel Branchik shared 12 photos to the **Tribute Wall** album.



October 9 at 8:11 PM



Benaiah Gabriel Branchik lit a candle in honor of Cherish.

You were the best friend I could've ever asked for. You were authentic through and through always just you. This world isn't going to be the same without you, there's a hole in my heart where you should be, so many years and so many struggles later you were still the same heart and smile that we all knew and loved. You went too soon, I'll never forget you.

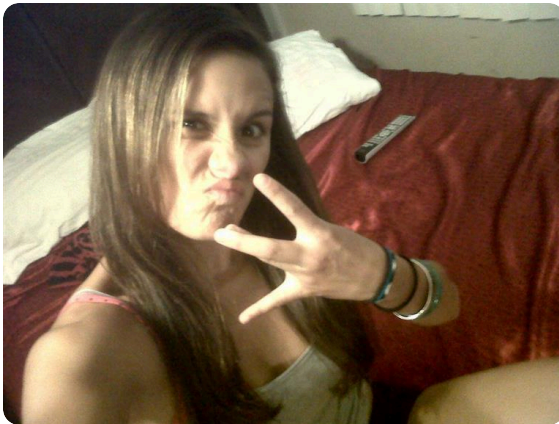


October 6 at 8:44 AM



Benaiah Gabriel Branchik shared 12 photos to the **Tribute Wall** album.

October 9 at 8:11 PM

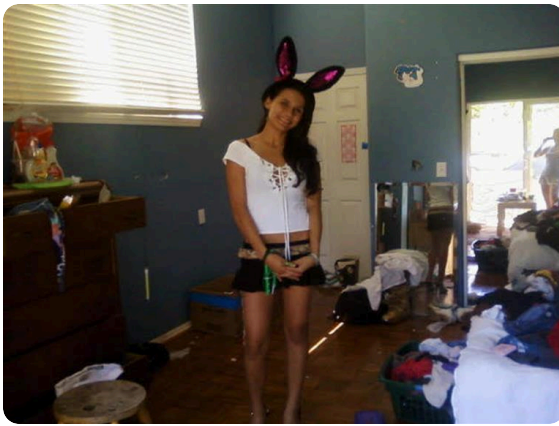
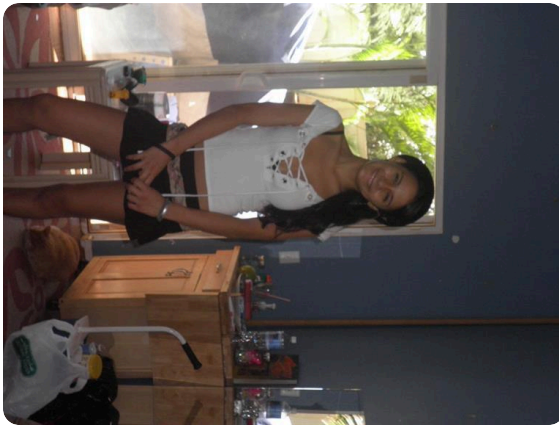
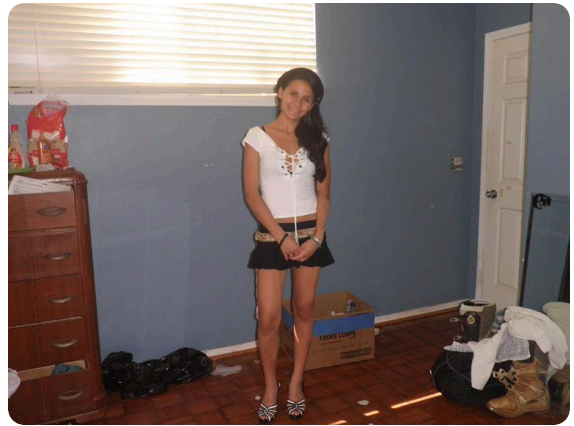




Media

Cherish Lilinoe Pali

SEP 23, 1993 - AUG 3, 2025





Memories only last if you share them

Join us in honoring Cherish by contributing to a collection of shared memories.



Scan to Visit



MAUI MEMORIAL PARK
NAKAMURA MORTUARY
CEMETERY, CREMATION & FUNERAL